

DIN 15231

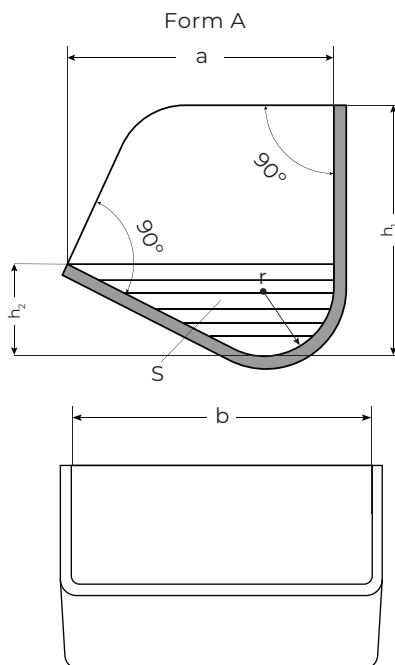
Steel elevator buckets in a welded version in accordance with norm DIN 15231 (dimensions in mm) – Shallow type

b mm	a mm	h ₁ mm	h ₂ mm	r mm	Weight of a cup form A in kg made of steel (~ 7,85 kg/dm ³) of the wall thickness:*					Capacity S** x b dm ³
					1	1,5	2	3	4	
80	75	67	24	19	0,15					0,09
100	90	80	28	23	0,22	0,33				0,15
125	106	95	34	27	0,32	0,48	0,64			0,28
160	125	112	40	32	0,48	0,70	0,96			0,49
200	140	125	45	36	0,65	0,95	1,30	1,9		0,77
250	160	140	50	40	0,86	1,30	1,75	2,6		1,22
315	180	160	56	45		1,80	2,40	3,6	4,8	1,93
400	200	180	63	50			3,25	4,9	6,5	3,07
500	224	200	71	56				6,6	8,8	4,84

*Empty fields: assignment not recommended for steel. Other materials require different wall thicknesses.

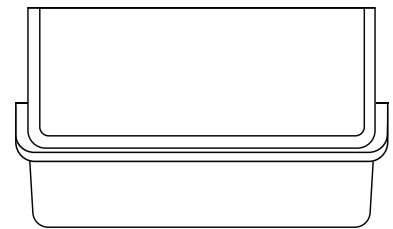
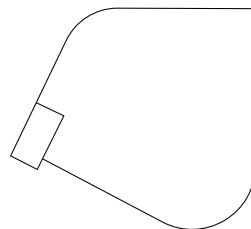
**S = horizontally hatched area in the image of shape A

Holes at all positions of the elevator buckets made according to DIN 15236 sheet 1 (belt bucket elevator) or sheet 4 (chain bucket elevator)

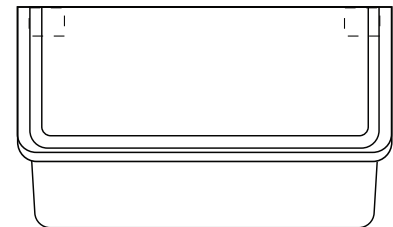
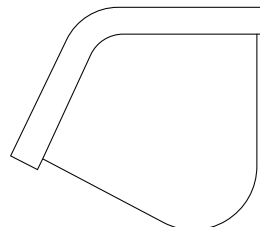


Steel elevator buckets may be strengthened even further with welded edge reinforcement. Version in Form B include a front reinforcement or Form C include a three sided edge reinforcement

Form B



Form C



Material: Steel St-37, St-52 / HARDOX / Creusabro / Stainless steel 1.4301, 1.4404, 1.4571, 1.4016 / Aluminium / heat-resisting steel

Surface execution: Primed, galvanized, enameled, pickled, sand blasted

For use in: Mills, concentrated feed plants, malt, sugar and food industries, chemical industries