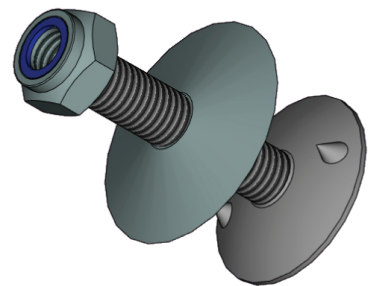
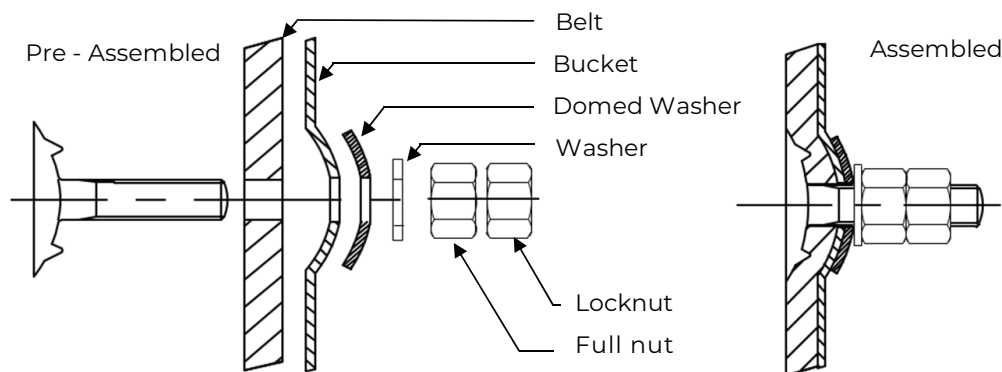
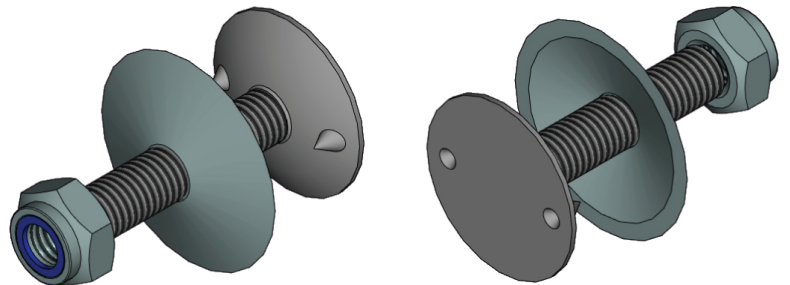
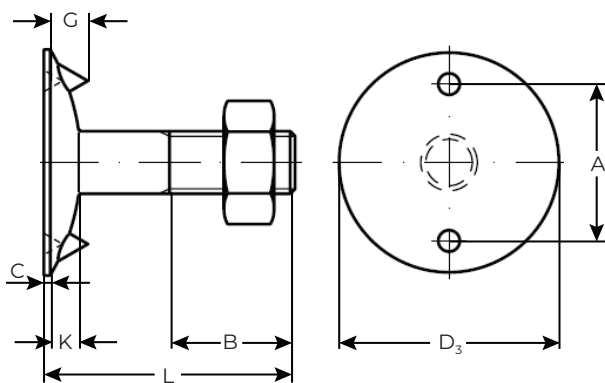


# DIN 15237

Screws according to DIN 15237 used in the assembly of elevator buckets to belts. Thanks to their structure, they prevent rotation and unscrewing of the connected elements. The products have two projections on the bottom and a concave head.

The products are mounted in special recesses and holes. The dome shape of the head adapts to the recess, ensuring durable and safe connections.

Ref.	D <sub>3</sub> mm	A mm	C <sub>max</sub> mm	G mm	K mm	L mm	B mm
M6	20	14	1	3,5	2,5	20	12
M8	28	20	1	5	3,5	25/30/35/40	15/18/18/20
M10	35	25	1	6	4,5	30/35/40/50	18/20/20/20
M12	42	30	1,2	7	5,2	35/40/50/60	20/25/28/28



Material: black steel, galvanized, stainless steel