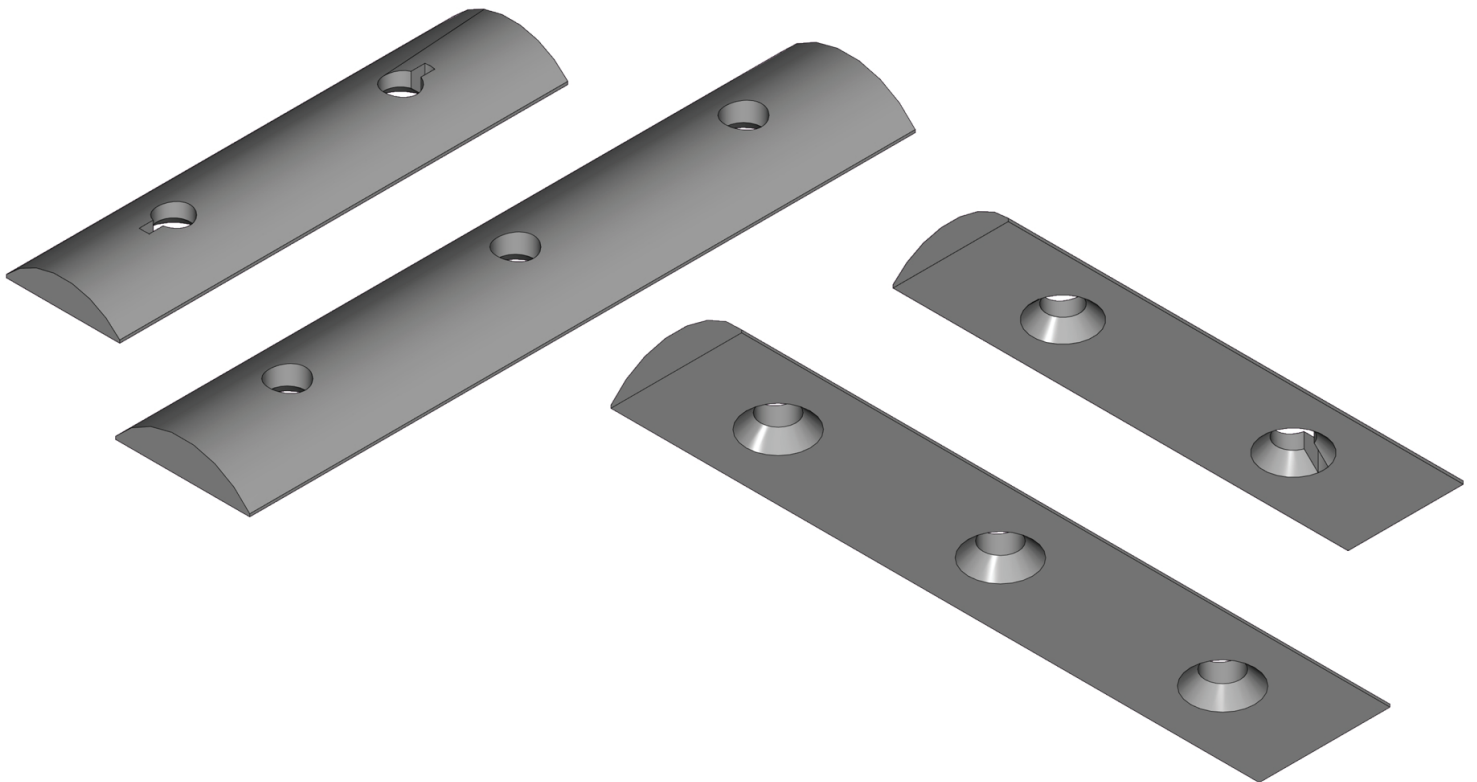


Halfround segments

DIN 7991, DIN 604 or DIN 605 mounting screws.

Dimension 40 x 10 mm
Dimension 50 x 13 mm

Length on request.



Material: steel, galvanised steel

Made of flat semi-round steel similar to DIN 1018

For attaching elevator buckets to belts

If necessary with similar countersunk screws DIN 7991